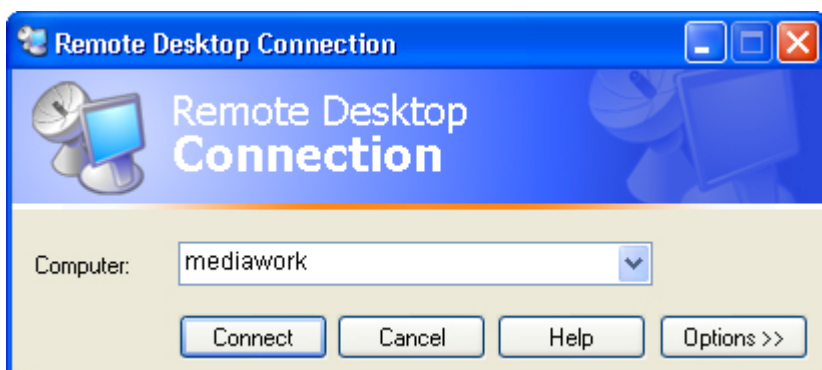




Connect your remote computer to the host computer

To connect your home computer, which is the client (or remote) computer to your work (or host) computer, follow these steps:

1. On your home computer, click **Start**, point to **All Programs**, and then point to **Accessories**.
2. In the **Accessories** menu, point to **Communications**, and then click **Remote Desktop Connection**.
3. In the **Computer** box, type the computer name of your host computer, if you don't know this please contact the helpdesk at (954)741-2972.



4. Click **Connect**.
5. When the **Log On to Windows** dialog box appears, type your user name, password, and domain (if required), and then click **OK**.



The Remote Desktop window opens, and you see the desktop settings, files, and programs that are on your host computer, which in this example is your work computer. Your host computer remains locked, and nobody can access it without a password. In addition, no one will be able to

see the work you are doing remotely.

To end your Remote Desktop session:

1. Click **Start**, and then click **Log Off** at the bottom of the **Start menu**.
2. When prompted, click **Log Off**.

